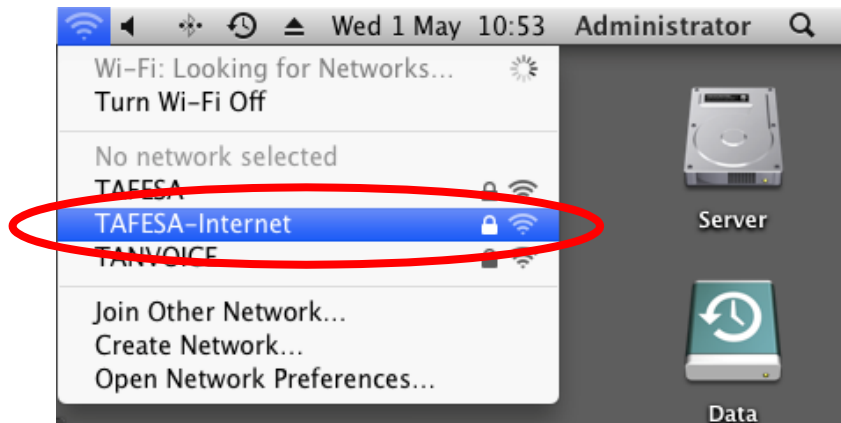

TAFE SA STUDENT WIRELESS ACCESS

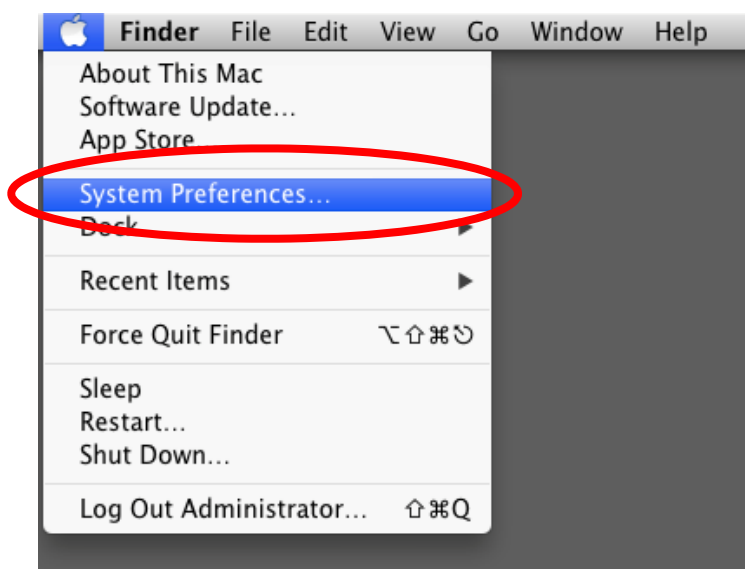
SAFARI FOR OSX

PERFORM THE FOLLOWING STEPS TO ACCESS THE INTERNET USING THE TAFESA-INTERNET WIRELESS SERVICE

1. Using your wireless adapter software, browse for and connect to **TAFESA-Internet**. If you encounter issues please refer to the corresponding TAFE SA wireless network guide for your operating system located at <http://www.tafesa.edu.au/services/student-wireless-network>.

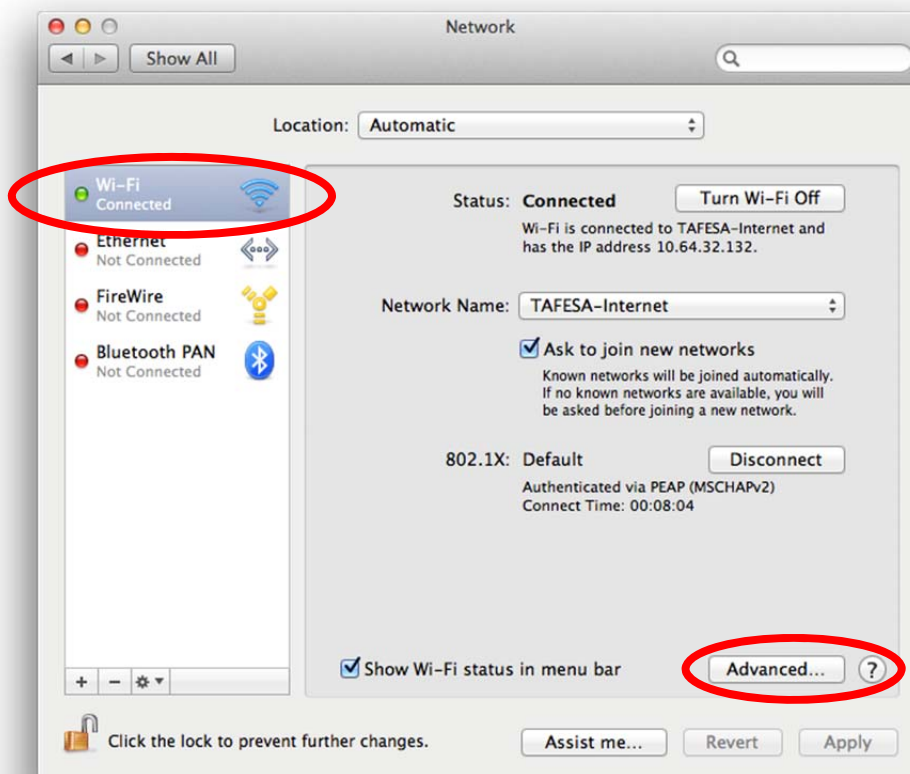


1. Use the apple menu to open the **System Preferences** window and double click on **Network**.

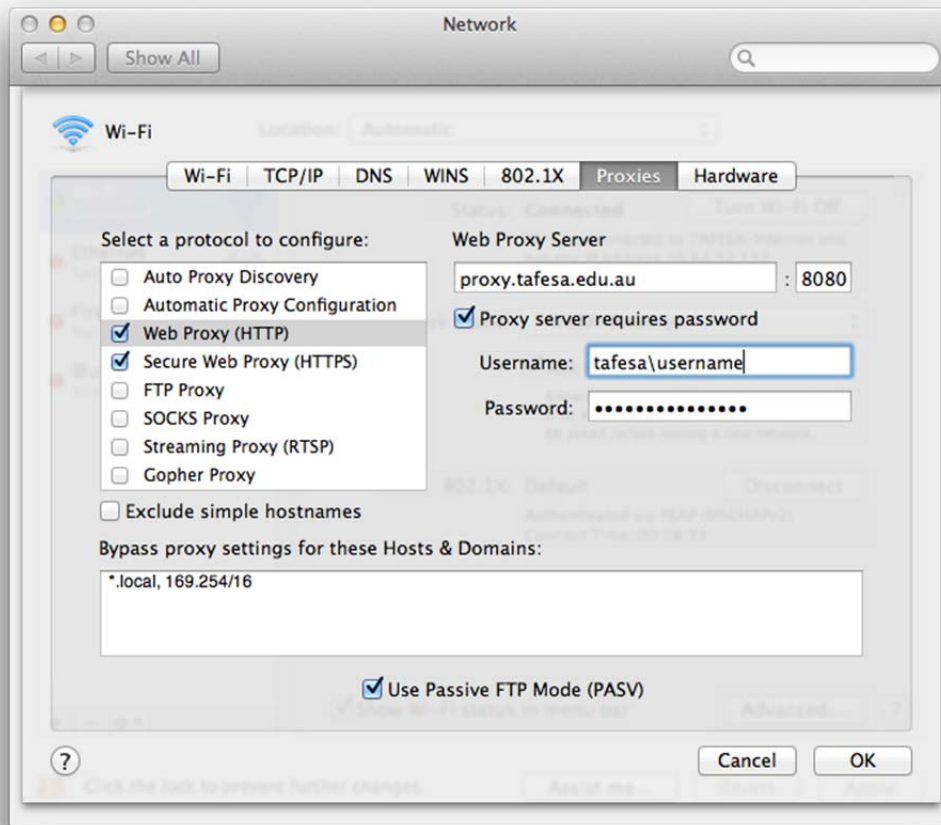




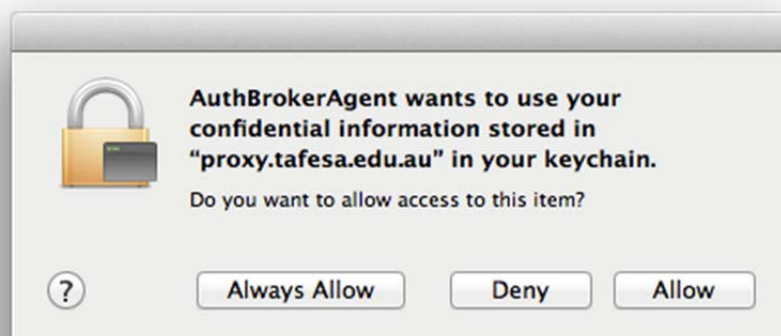
2. Select the **Wi-Fi** or **Airport** on the Left and then the **Advanced** button.



- In the **Select a protocol to configure:** window, enter the details below. Both **Web Proxy (HTTP)** and **Secure Web Proxy (HTTPS)** are required for normal internet browsing.
 - Web Proxy Server** – **proxy.tafesa.edu.au : 8080**
 - Username** – **your TAFESA network username**
 - Password** – **your TAFESA network password**



- If keychain is running you may see this window, select **Always Allow**.



- You should now be able to browse the internet.

Disclaimer: The Department of Further Education, Employment, Science and Technology (DFEEST) is not liable for any loss resulting from any action taken or reliance made by students on any information contained within this document (including, without limitation, third party information). Students obtain access to the wireless network at their own risk and DFEEST accepts no responsibility for any interference, loss, damage or disruption to privately own computer system which arises in connection with the use of this network. Students must take their own precautions to ensure that the process which they employ to obtain access to this wireless network does not expose them to the risk of viruses, malicious computer code or other forms of interference which may damage their own computer system.