
CONFIGURING WINDOWS XP FOR THE TAFESA-INTERNET WIRELESS NETWORK

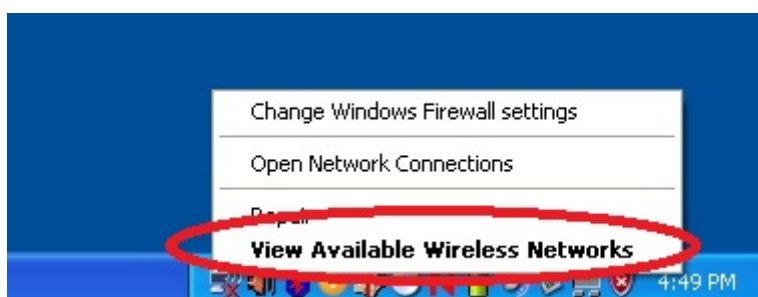
Please ensure you have the following details ready before you commence:

- Your TAFESA network username and password.
- The laptop or tablet PC is NOT connected to any network(s) via cables.

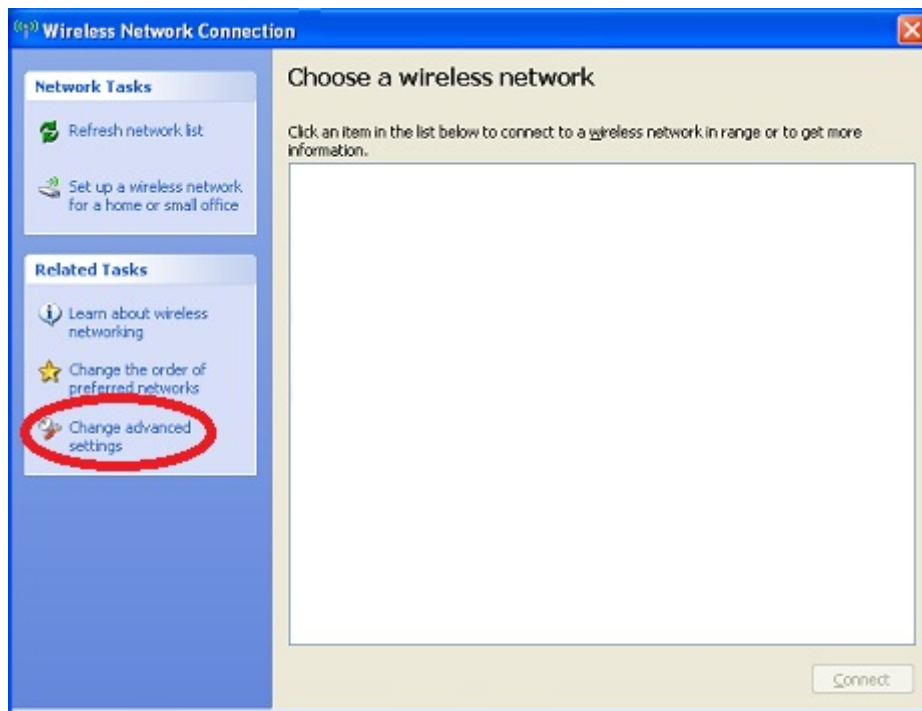
**** Most wireless devices should be able to automatically connect to the TAFESA-Internet wireless network by selecting the network and detecting the settings. If your device does not support this feature please follow the instructions contained in this guide.**

**** To access the internet you will need to configure a proxy server within your web browser software. Please visit <http://portal.tafesa.edu.au/internet> to obtain the required settings or consult the corresponding guide at <http://tafesa.edu.au/services/student-wireless-network>**

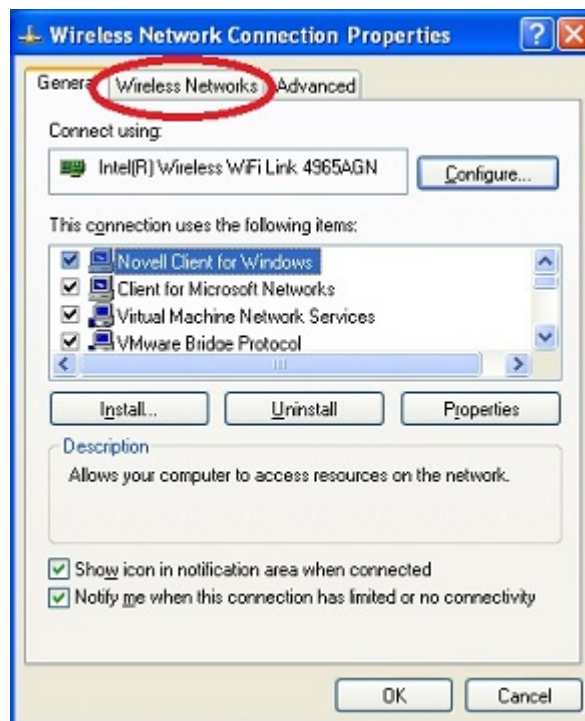
1. Login to your laptop or tablet PC with your username and password.
2. From the taskbar in the bottom right hand corner of your screen, right click on the wireless network icon as shown in the picture below and select **View Available Wireless Networks**.



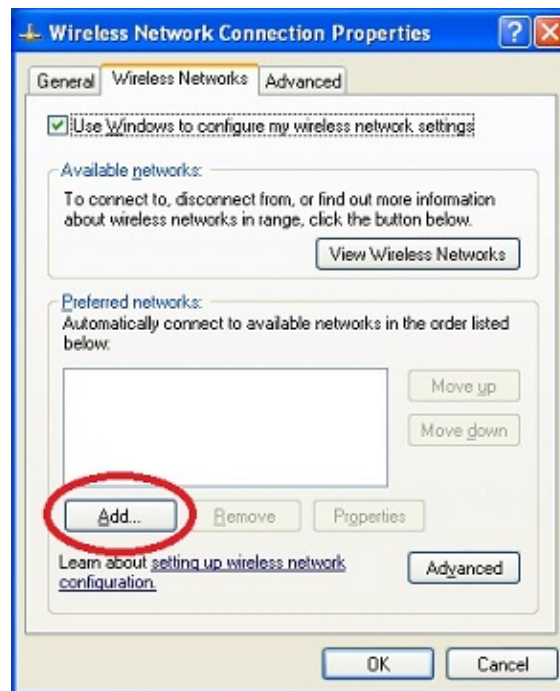
- From the **Wireless Network Connection** screen select **Change Advanced Settings**.



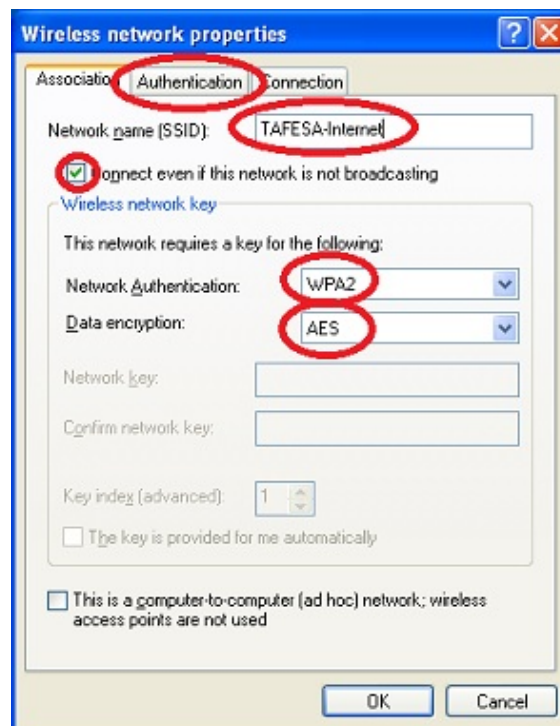
- From the **Wireless Network Connection Properties** screen select **Wireless Networks** to start configuring the wireless network.



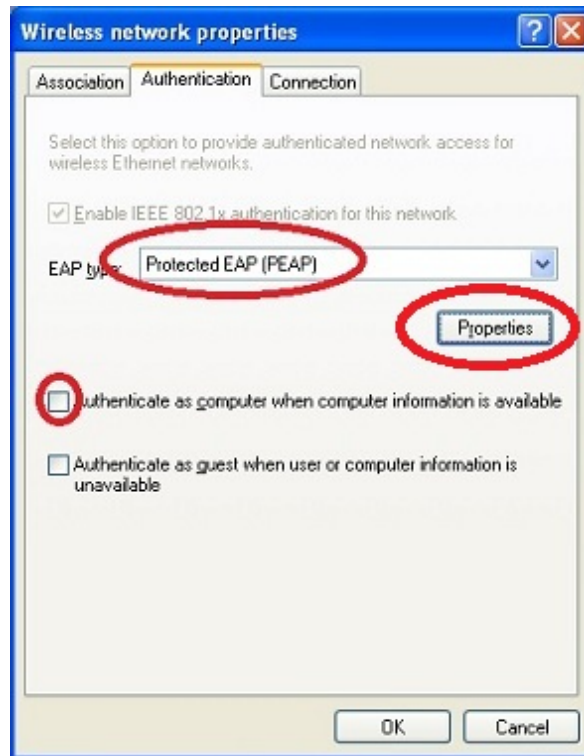
5. Select **Add** to create a network profile.



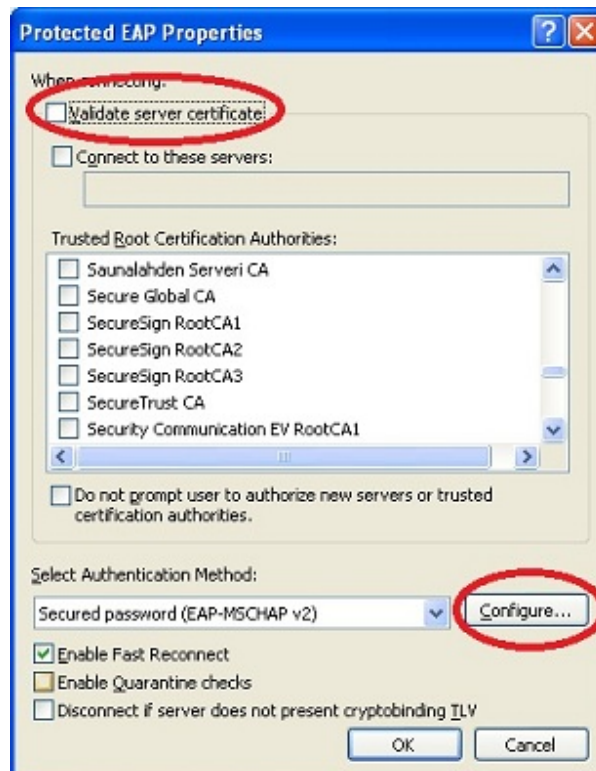
6. Enter the details as shown below and then select the **Authentication** tab:
- **Network Name (SSID) – TAFESA-Internet**
 - **Security Type – WPA2**
 - **Encryption Type – AES**
 - **Connect even if the network is not broadcasting - Ticked**



7. Select **Protected EAP (PEAP)** as the *EAP Type*, un-tick *Authenticate as computer when computer information is available* and then select *Properties*.



8. Make sure *Validate Server Certificate* is un-ticked then select *Configure*.



9. In the EAP MSCHAPv2 Properties window make sure **Automatically use my Windows logon name and password** is un-ticked . Then select **OK** and **OK** again .



10. Windows will then attempt to connect you to the TAFESA-Internet wireless network. You will be prompted with a balloon window similar to the image below. Click on the balloon window to enter your network username and password.



11. Enter your TAFESA computer network username in the **User name** field and password in the **Password** field, leaving the **Domain** field blank and then select **OK**. Your computer should now connect to the TAFESA-Internet wireless network.



Disclaimer: The Department of Further Education, Employment, Science and Technology (DFEEST) is not liable for any loss resulting from any action taken or reliance made by students on any information contained within this document (including, without limitation, third party information). Students obtain access to the wireless network at their own risk and DFEEST accepts no responsibility for any interference, loss, damage or disruption to privately own computer system which arises in connection with the use of this network. Students must take their own precautions to ensure that the process which they employ to obtain access to this wireless network does not expose them to the risk of viruses, malicious computer code or other forms of interference which may damage their own computer system.