

---

# CONFIGURING WINDOWS 7 FOR THE TAFESA-INTERNET WIRELESS NETWORK

---

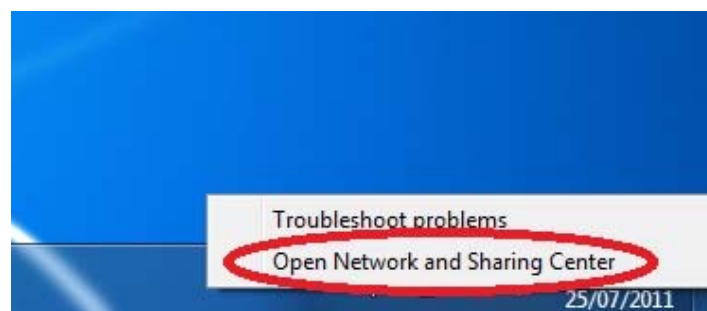
Please ensure you have the following details ready before you commence:

- Your TAFESA network username and password.
- The laptop or tablet PC is NOT connected to any network(s) via cables.

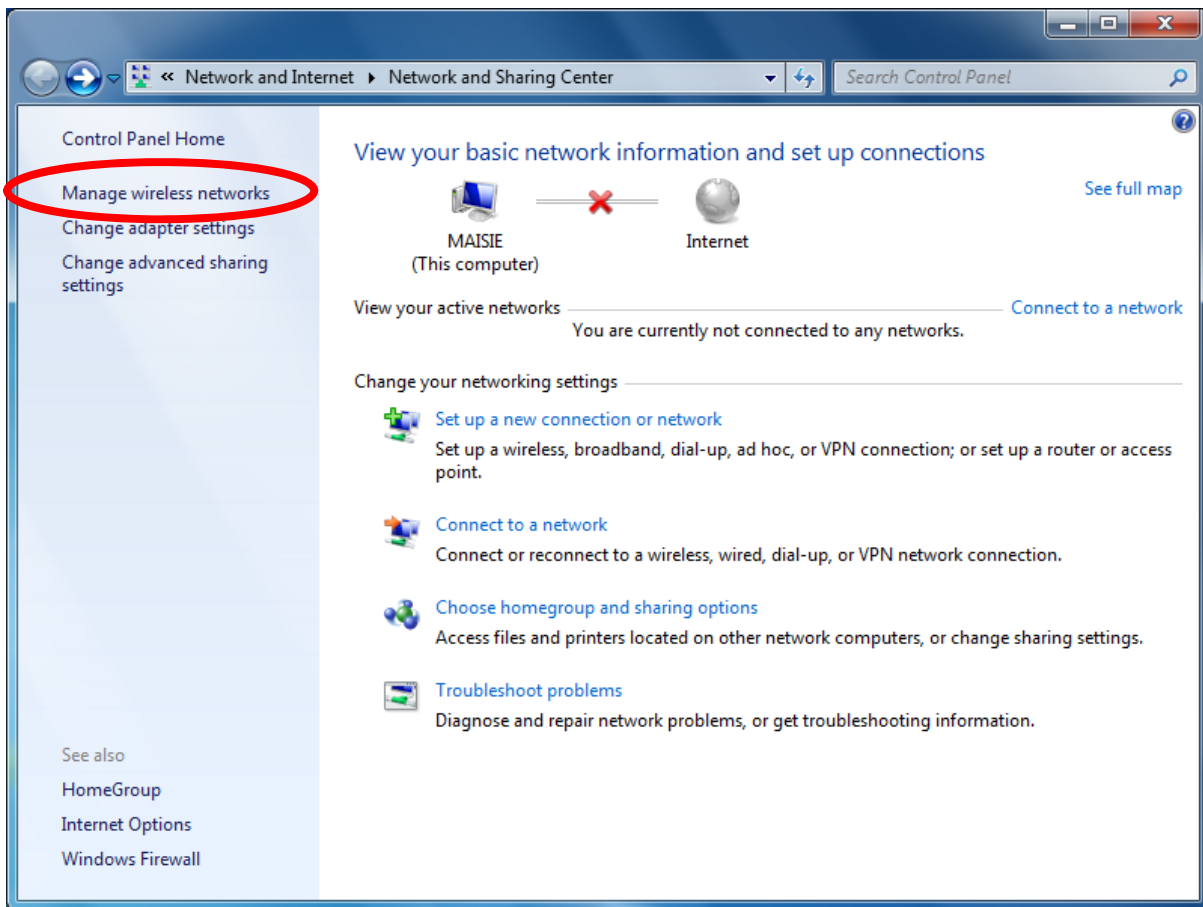
**\*\* Most wireless devices should be able to automatically connect to the TAFESA-Internet wireless network by selecting the network and detecting the settings. If your device does not support this feature please follow the instructions contained in this guide.**

**\*\* To access the internet you will need to configure a proxy server within your web browser software. Please visit <http://portal.tafesa.edu.au/internet> to obtain the required settings or consult the corresponding guide at <http://tafesa.edu.au/services/student-wireless-network>**

1. Login to your laptop or tablet PC with your username and password.
2. From the taskbar in the bottom right hand corner of your screen, right click on the network icon as shown in the picture below and select ***Open Network and Sharing Center***.



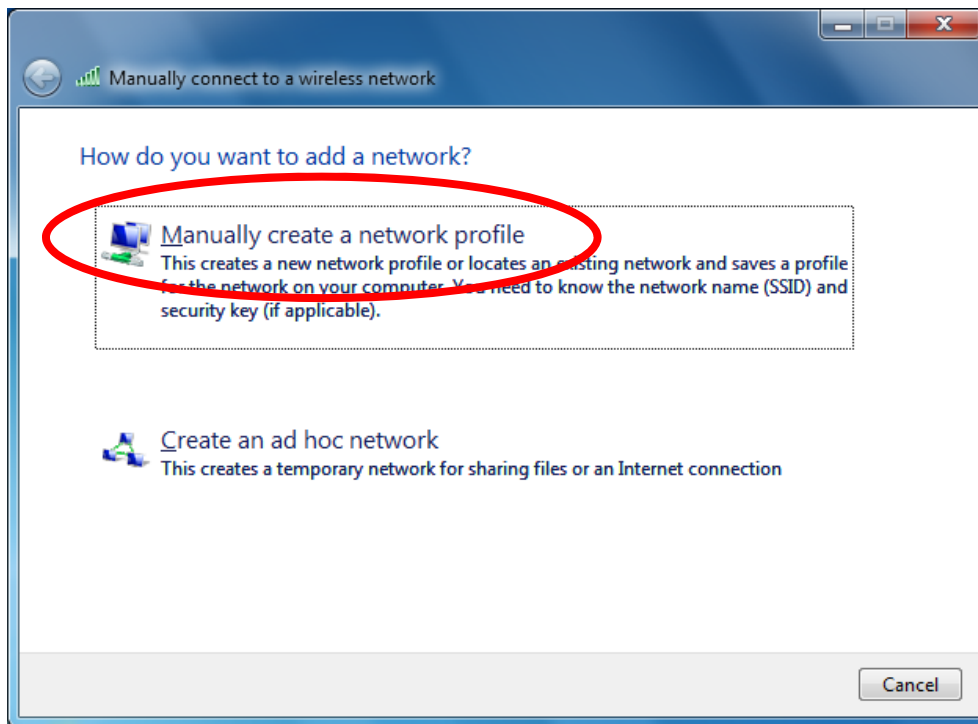
3. From the **Network and Sharing Center** window, select **Manage Wireless Networks**.



4. From the **Manage Wireless Networks** window, select **Add**.

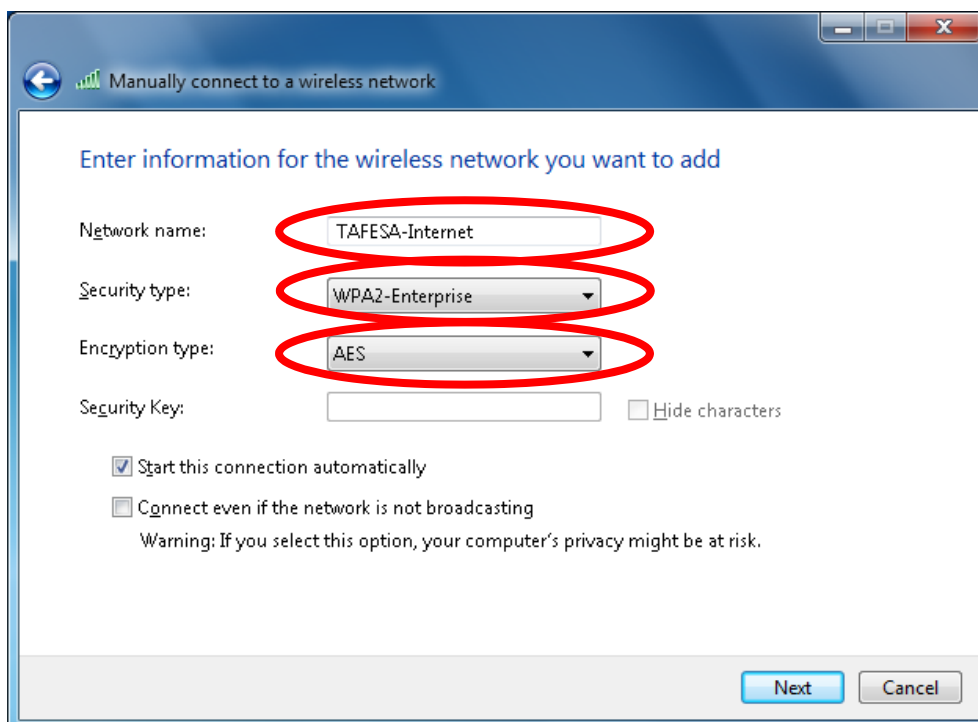


5. Select **Manually create a network profile**.

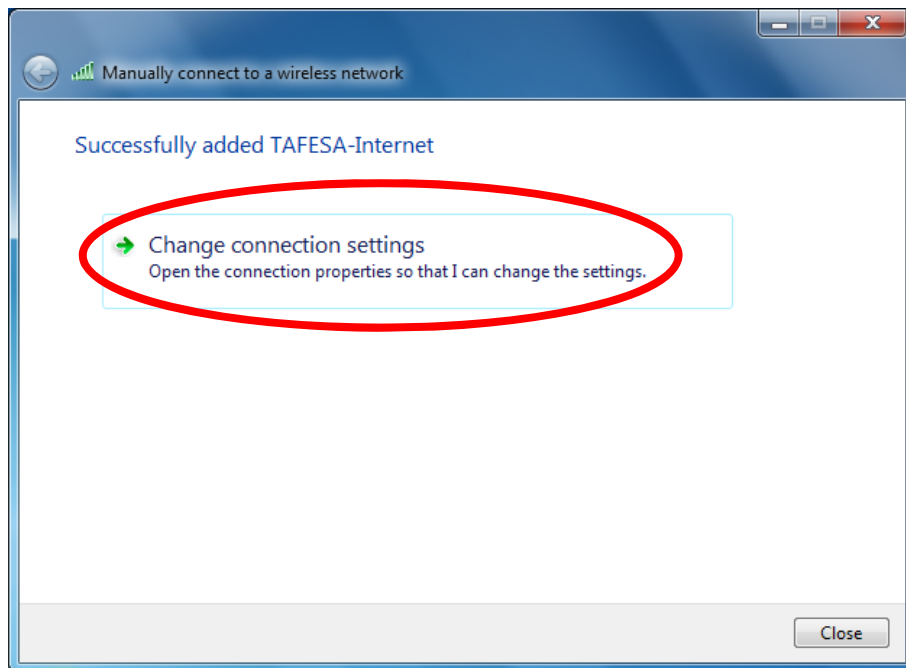


6. Enter the details as shown below and then select **Next**:

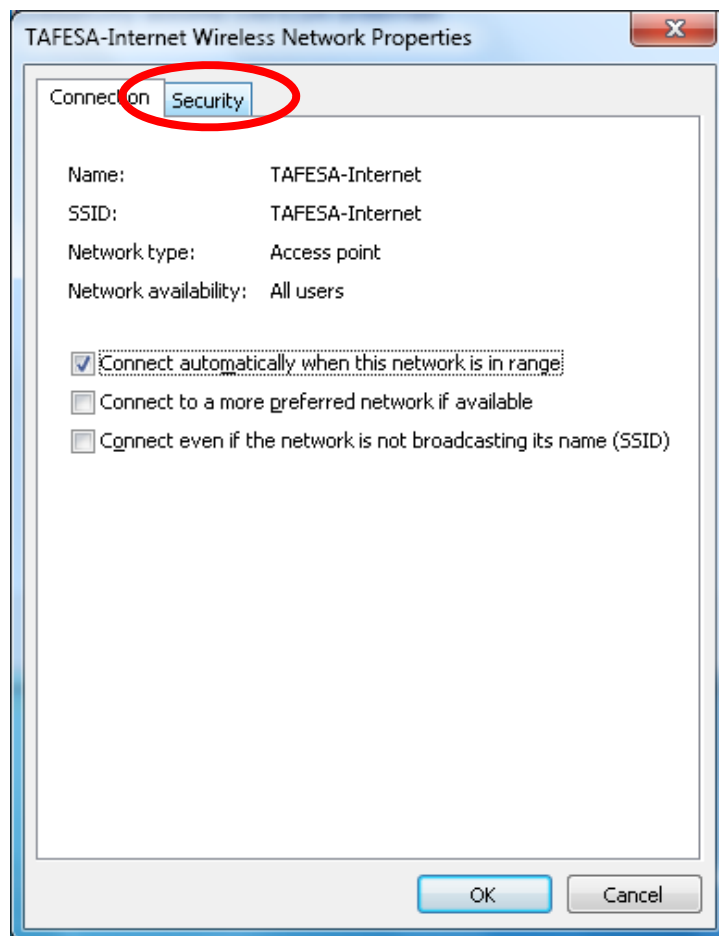
- **Network Name – TAFESA-Internet**
- **Security Type – WPA2-Enterprise**
- **Encryption Type – AES**



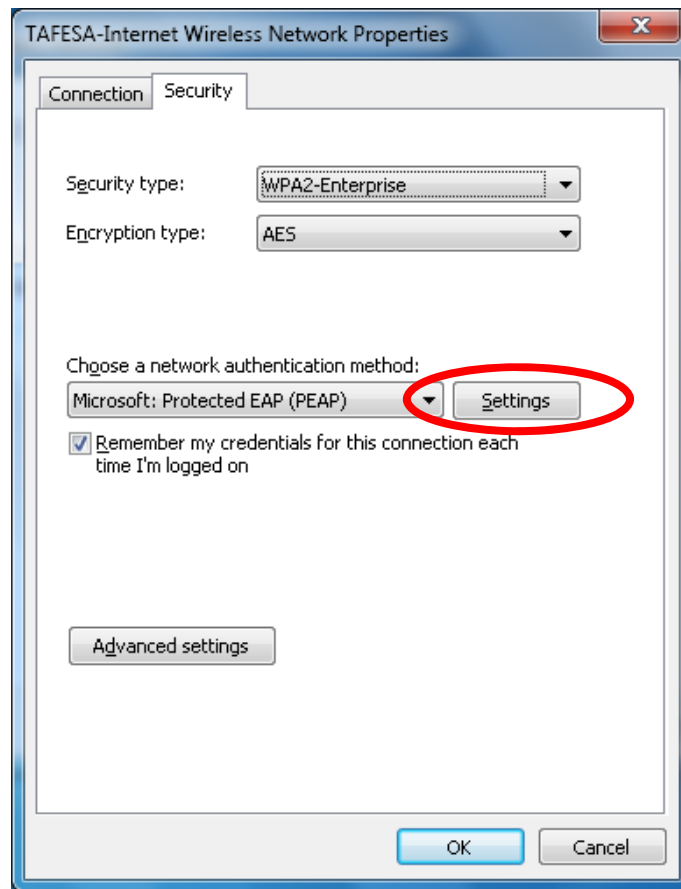
7. Select **Change connection settings**.



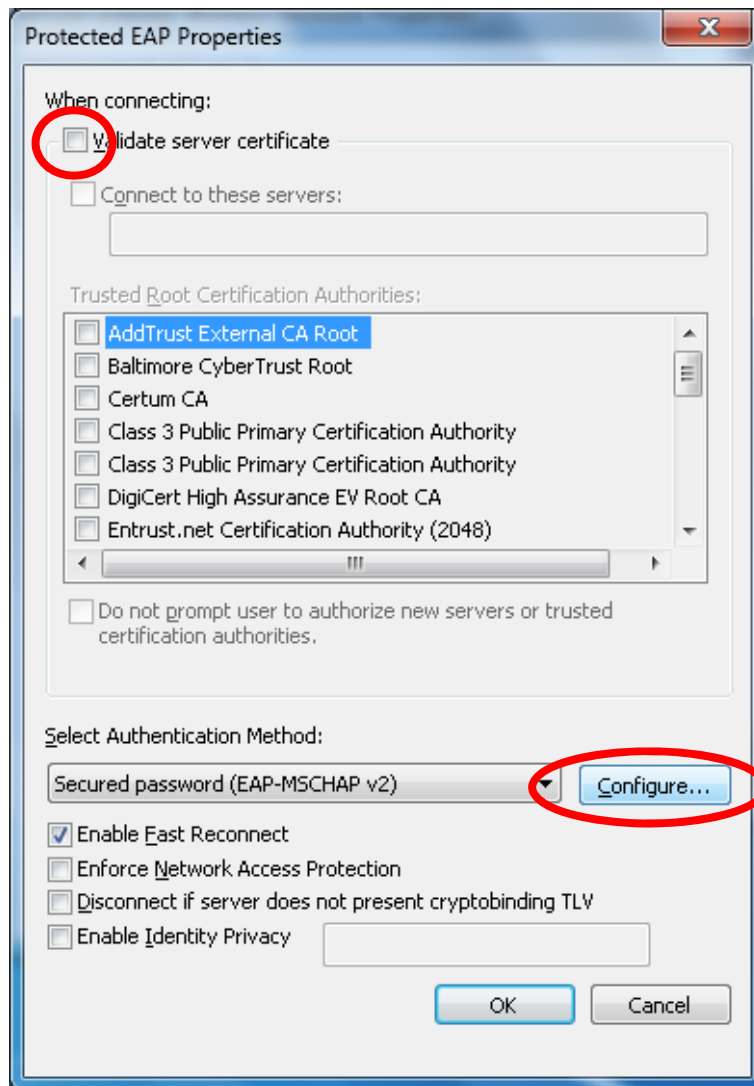
8. From the **TAFESA-Internet Wireless Network Properties** window, select the **Security** tab.



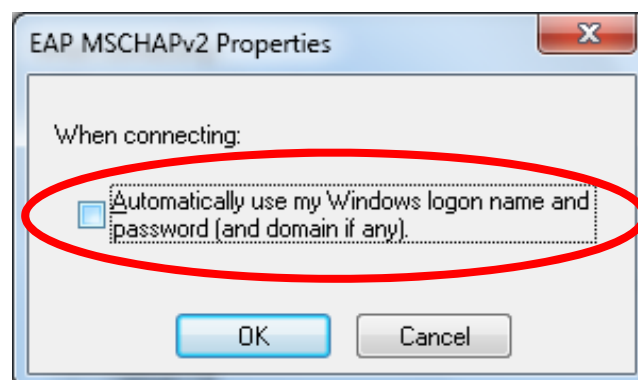
9. Select **Settings** next to **Choose a network authentication method**.



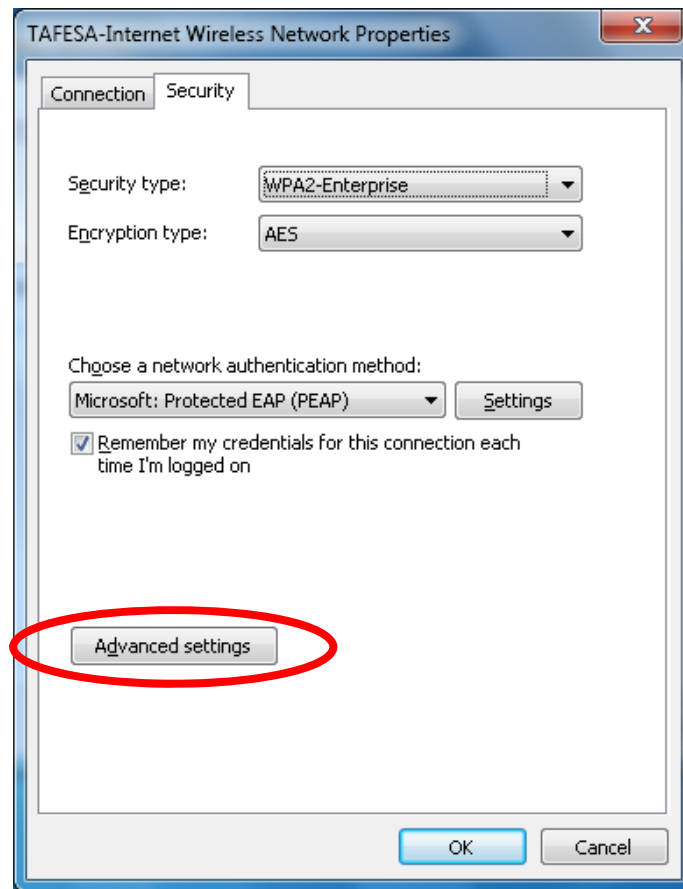
10. Ensure **Validate Server Certificate** is un-ticked and select **Configure**.



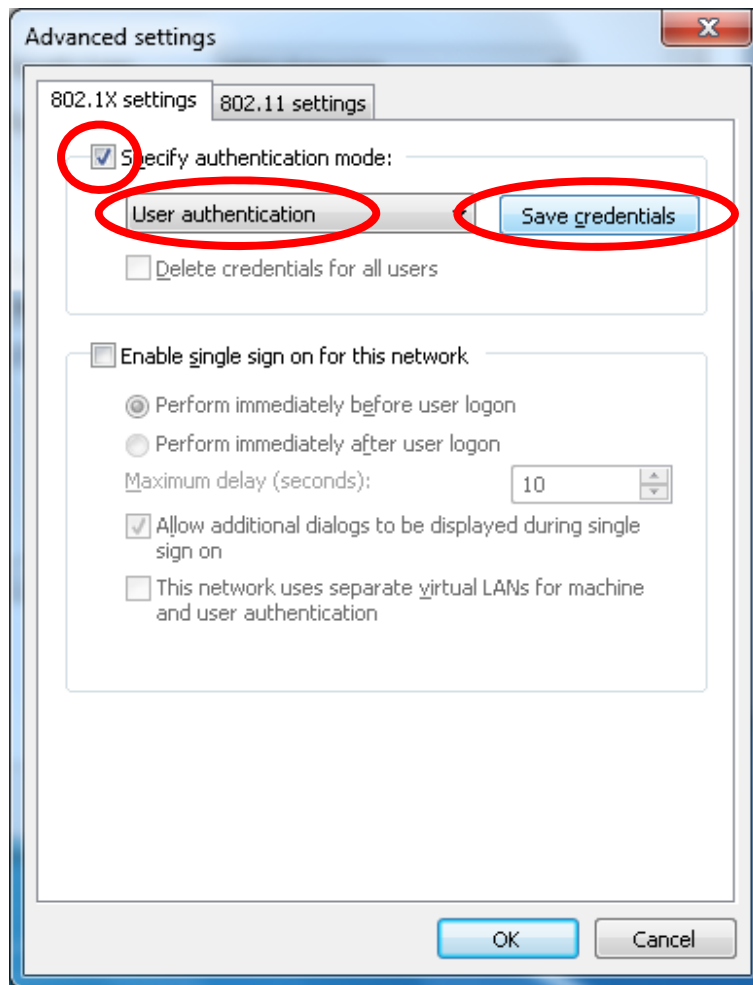
11. Ensure the check box is un-ticked for **Automatically use my Windows logon name and password** select **OK** and **OK** again.



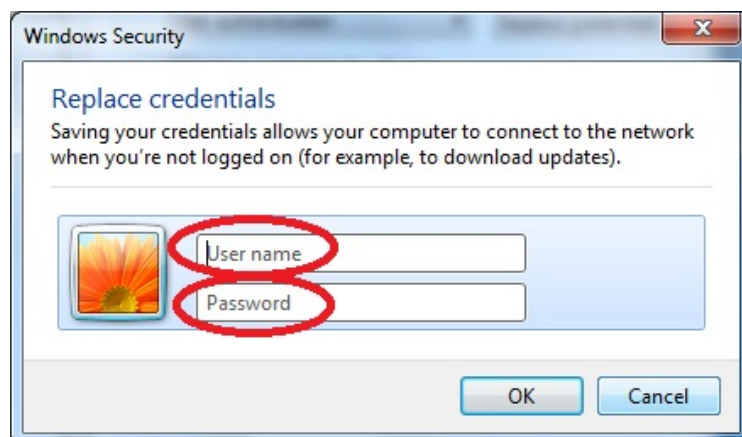
12. From the **TAFESA-Internet Wireless Network Properties**, select **Advanced Settings**.



13. On the 802.1X settings tab ensure **Specify Authentication Mode** is ticked and **User Authentication** is selected, then select **Replace credentials**.



14. Enter your TAFESA network username and password and select **OK three times** and then **Close** to complete the configuration. Your computer should now connect to the TAFESA-Internet wireless network..





***Disclaimer:*** The Department of Further Education, Employment, Science and Technology (DFEEST) is not liable for any loss resulting from any action taken or reliance made by students on any information contained within this document (including, without limitation, third party information). Students obtain access to the wireless network at their own risk and DFEEST accepts no responsibility for any interference, loss, damage or disruption to privately own computer system which arises in connection with the use of this network. Students must take their own precautions to ensure that the process which they employ to obtain access to this wireless network does not expose them to the risk of viruses, malicious computer code or other forms of interference which may damage their own computer system.