
CONFIGURING OSX V10.7.X FOR THE TAFESA-INTERNET WIRELESS NETWORK

Please ensure you have the following details ready before you commence:

- Your TAFESA network username and password.
- The laptop or PC is NOT connected to any network(s) via cables.

**** Most wireless devices should be able to automatically connect to the TAFESA-Internet wireless network by selecting the network and detecting the settings. If your device does not support this feature please follow the instructions contained in this guide.**

**** To access the internet you will need to configure a proxy server within your web browser software. Please visit <http://portal.tafesa.edu.au/internet> to obtain the required settings or consult the corresponding guide at <http://tafesa.edu.au/services/student-wireless-network>.**

1. Login to your laptop or with your username and password.
2. From the taskbar in the top right hand corner of your screen click on the network icon as shown in the picture below, check that **Wi-Fi** is **On** and select **Join Other Networks**.



3. In the **Join Other Networks** window, enter the details as shown below, then select **Join**
 - **Network Name** – **TAFESA-Internet**
 - **Security** – **WPA2-Enterprise**
 - **Username** – **your TAFESA network username**
 - **Password** – **your TAFESA network password**

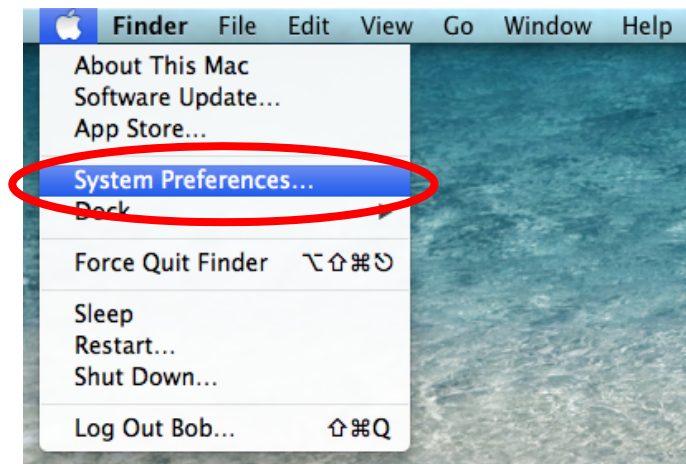


4. From the **Verify Certificate** window select **Continue**.

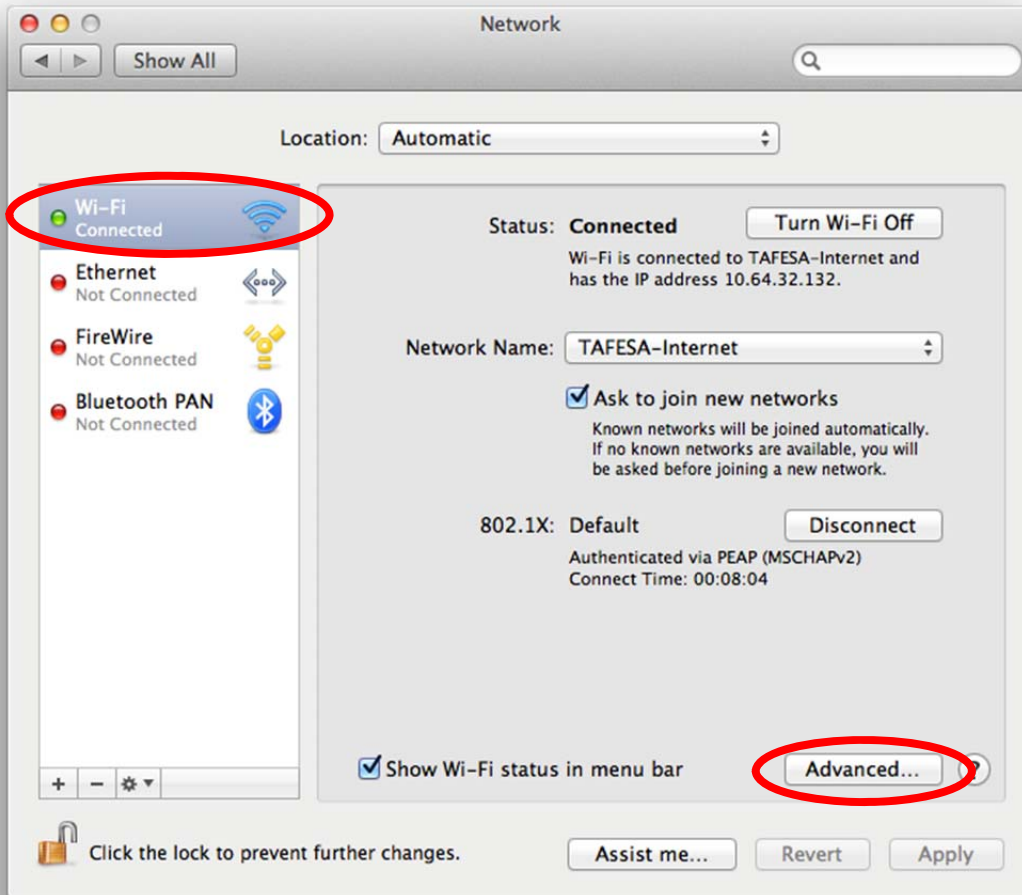


5. You should now be connected to **TAFESA-Internet**.

- Now connected to **TAFESA-Internet**, use the apple menu to open the **System Preferences** window and double click on **Network**.

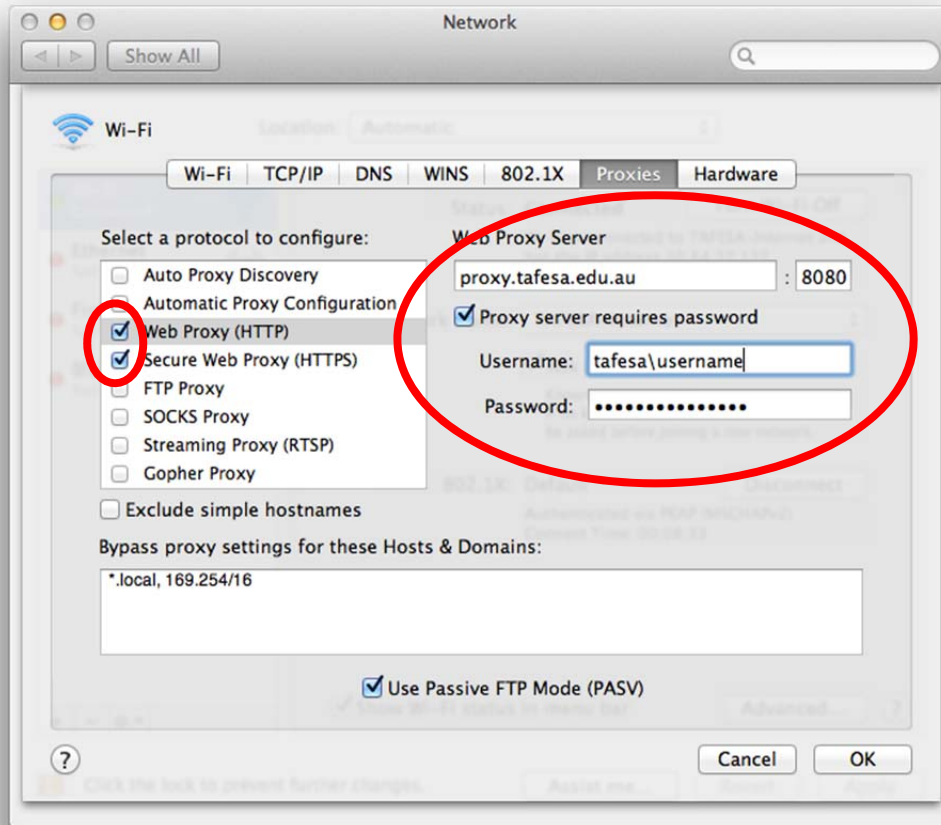


7. Select the **Wi-Fi** or **Airport** on the Left and then the **Advanced** button.



8. For each of the protocols listed in the **Select a protocol to configure:** window, enter the details below. Both **Web Proxy (HTTP)** and **Secure Web Proxy (HTTPS)** are required for normal internet browsing.

- **Web Proxy Server** – **proxy.tafesa.edu.au : 8080**
- **Username** – **your TAFESA network username**
- **Password** – **your TAFESA network password**



9. If keychain is running you may see this window, select **Always Allow**. You should now be able to browse the internet



Disclaimer: The Department of Further Education, Employment, Science and Technology (DFEEST) is not liable for any loss resulting from any action taken or reliance made by students on any information contained within this document (including, without limitation, third party information). Students obtain access to the wireless network at their own risk and DFEEST accepts no responsibility for any interference, loss, damage or disruption to privately own computer system which arises in connection with the use of this network. Students must take their own precautions to ensure that the process which they employ to obtain access to this wireless network does not expose them to the risk of viruses, malicious computer code or other forms of interference which may damage their own computer system.