

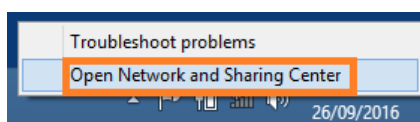
How to Guide

Connect to the TAFE SA Wireless Network – Windows 8 Laptop

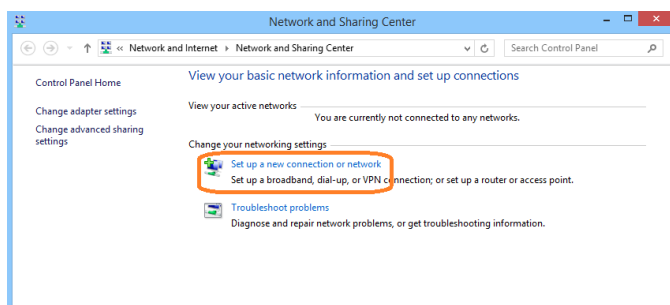
ICT Services

Connecting a Windows 8 Laptop

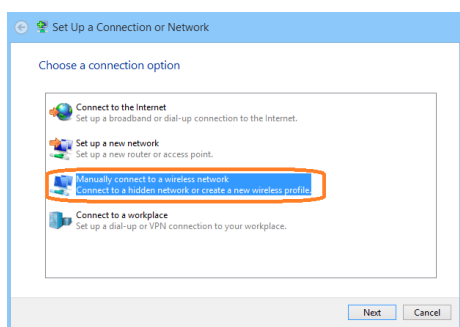
1. Ensure you are in range of the TAFESA-Internet wireless network (e.g. in the campus library or common student area) and log into your laptop in the normal way.
2. In the bottom right corner of the desktop taskbar, right click on the network icon as shown in the picture below, and select Open Network and Sharing Center.



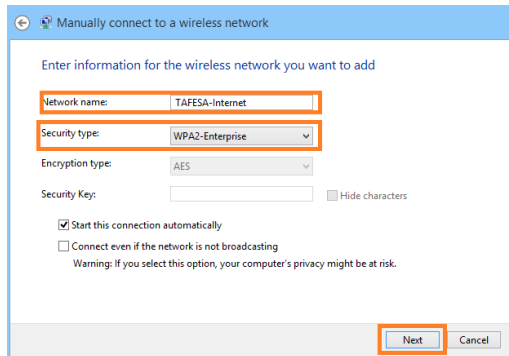
3. From the Network and Sharing Center window, select 'Set up a new connection or network'.



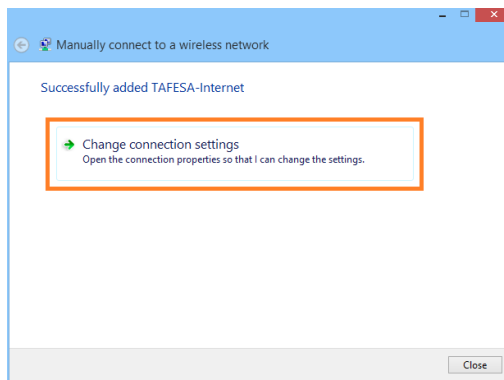
4. Select 'Manually connect to a wireless network', and click 'Next'.



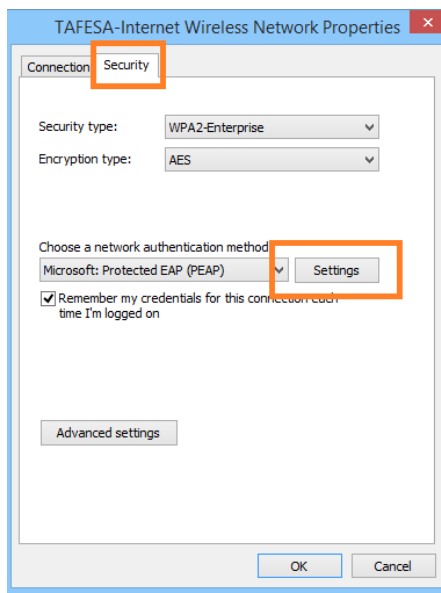
5. Enter the details as shown below and then select 'Next'.
 - a) Network Name – TAFESA-Internet
 - b) Security Type – WPA2-Enterprise



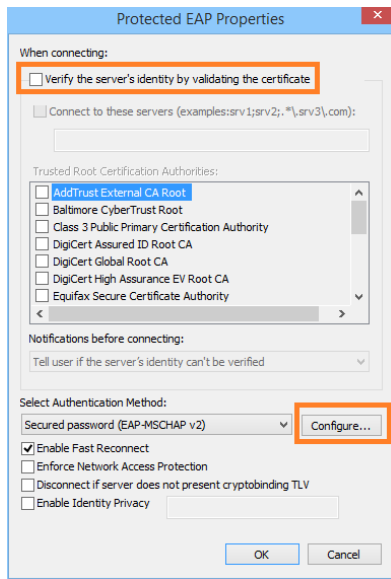
6. Select 'Change connection settings'.



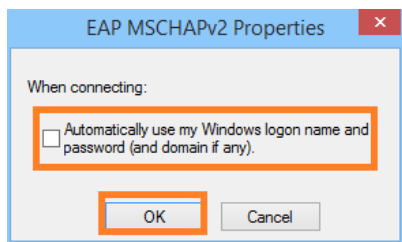
7. From the TAFESA-Internet Wireless Network Properties window, select the 'Security' tab, and then click on the 'Settings' button.



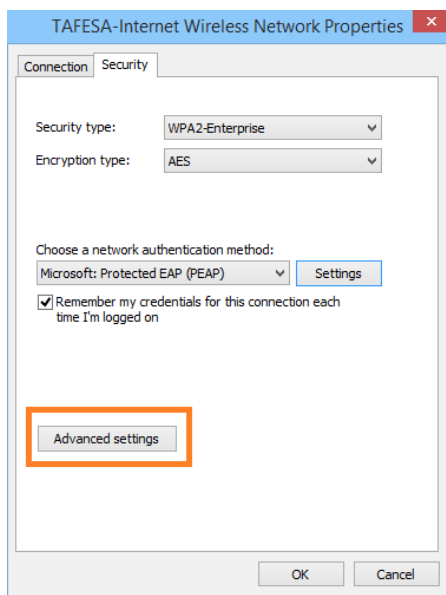
8. Ensure 'Verify the server's identity by validating the certificate' is un-ticked, and select Configure.



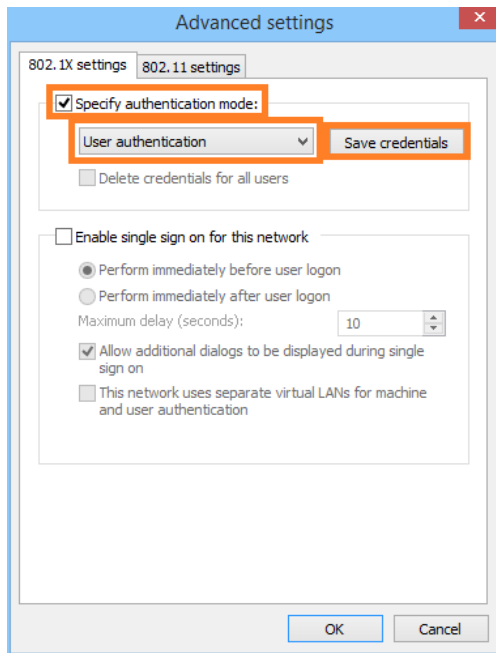
9. Ensure the check box is un-ticked for 'Automatically use my Windows logon name and password', and then click 'OK' twice.



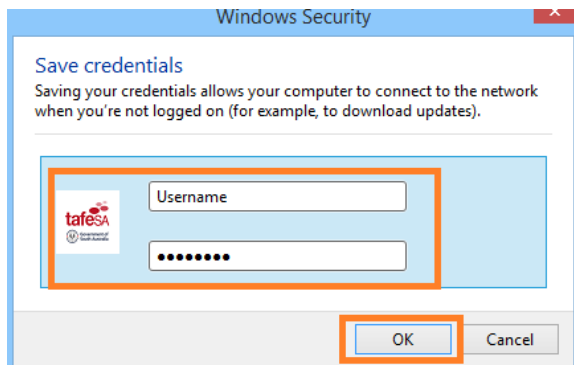
10. Next, click on the 'Advanced settings' button.



11. Tick the check box for Specify authentication mode and adjust the drop-down menu to User authentication. Then, click on Save credentials.



12. Enter your TAFESA network username and password. Next, select OK three times, and then Close to complete the configuration.



13. You should now be connected to TAFESA-Internet.

