

How to Guide

Set a Proxy Server - Mac OSX Laptop

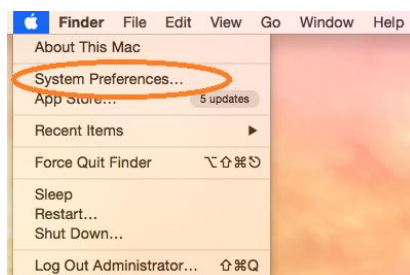
ICT Services

Setting a Proxy on a Mac OSX laptop (10.10.5)

1. Ensure you are connected to the TAFESA-Internet wireless network (there should be a tick next to it, as shown below).



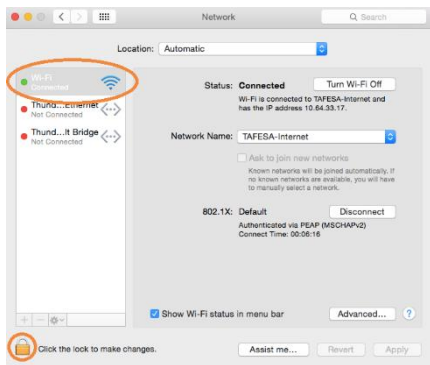
2. Open System Preferences... from Apple Menu in the top-left.



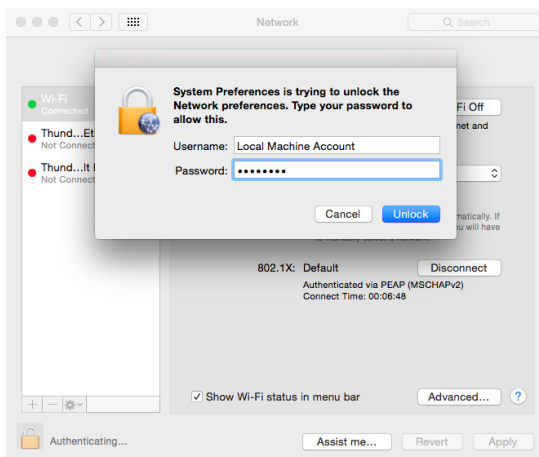
3. Click on the 'Network' icon.



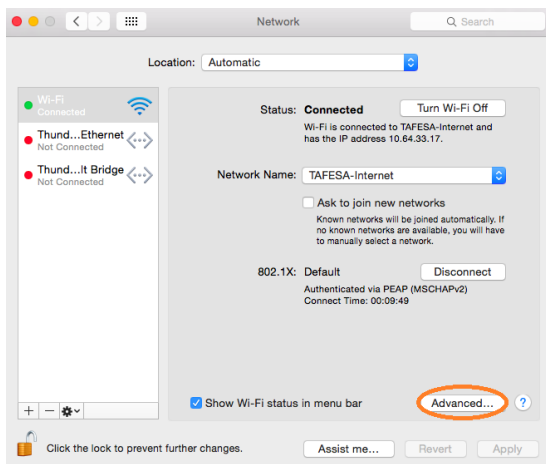
4. Select 'Wi-Fi' on the left, then click on the padlock on the bottom-left to unlock changes.



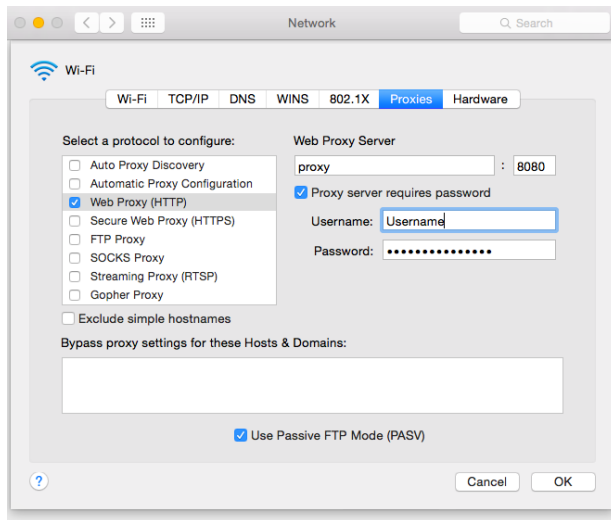
5. If the System Preferences popup window appears, enter your device's login details.



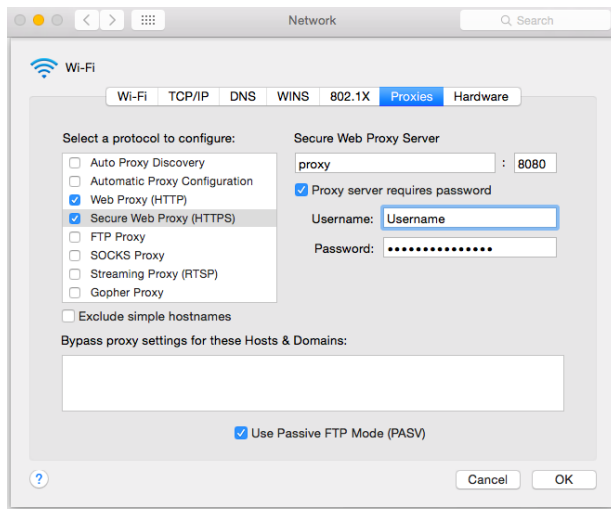
6. Click on the 'Advanced' button on the bottom-right.



7. Select Proxies from the menu bar. Select Web Proxy (HTTP), then enter 'proxy' and '8080' into the Web Proxy Server field. Next, tick the check box 'Proxy server requires password', and enter your TAFE SA username and password in the appropriate fields.



8. Select 'Secure Web Proxy (HTTPS)', then enter 'proxy' and '8080' into the Secure Web Proxy Server field. Next, tick the check box 'Proxy server requires password', and enter your TAFE SA username and password in the appropriate fields. Then click 'OK'.



9. At the Network window, click Apply.

